

Hard oxygen chamber

Metal chamber
Pressurized and oxygenated



Metal chamber

Adopt high strength steel integrated molding production. The whole structure is analyzed by mechanical finite element. To create a safe and reliable use of the foundation for users.



Comfortable pressure experience

The accessibility to atmospheres(7PSI)
Boost and reduce pressure automatically



Exquisite manufacturing technology

Stainless steel solid chamber

Internal and external intellectual control



Core technology



Handrail

Double handrail design, is to strengthen the chamber, and facilitate the user to assist in and out of the chamber.

Cabin door

Wide visual space, easier to observe internal and external situation.



Dialogue system

Controllable internal and external communication system at any time
Service call function in the chamber

Internal door closed error prevention system

When the door is not completely closed, the door cannot be started to work, to avoid damage caused by the rise of pressure



Pulley

Adjust the wheel tightness, easy to move and fix the chamber

Internal structure of chamber

More comfortable and convenient when in use



Internal smart control system

Easy to open the internal and external control screen intelligently at any time

Atmosphere lamp

Soft lighting helps protect eyesight while reading, and it is also conducive to the stability of the heart



Air conditioning system

To refrigerate the interior of the chamber, to stay comfortable environment when in use



Safe and secure, quality assurance



Pressure gauge



Emergency pressure
reducing valve



Manual pressure
reducing valve



Automatic constant
pressure valve

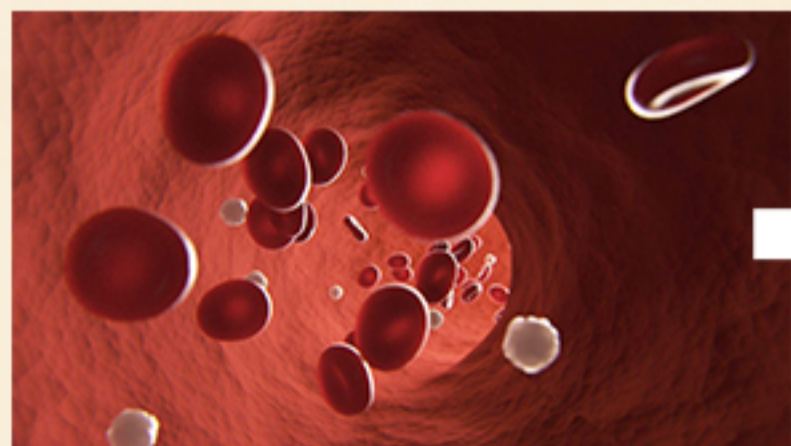
In high pressure environment

Increase the dissolved oxygen in the blood literature

Under high pressure environment

Increases physical dissolved oxygen

oxygen storage increases accordingly in the tissue



One atmosphere of pressure



Increasing pressure and oxygen

Oxygenated hemoglobin molecules are large and difficult to pass through narrow blood vessel walls. Dissolved oxygen molecules are small and can be dissolved into blood and body fluids in large quantities under high pressure.

---Quoted from China Technology Publishing House's popular science series, "Pressure to Disease"

Product parameters

HP1501-75

HP1501-90

Chamber size

2200*750*750mm

2200*900*900mm

Net weight of chamber

140kg

180kg

Chamber material

Stainless steel

Stainless steel

Set pressure

1.3ATA 1.5ATA 4PSI 7PSI optional

Components

Safety valve, Pressure reducing valve, Constant pressure valve, Spare valve, Observation window, Pressure gauge, Telephone, Control system, Mattress, Pillow, Light



Booster oxygen intelligent control system**Water-cooled air conditioner**

Size	BOYT1501	HX010
Machine size	760*420*720mm	420*400*580mm
Net weight of machine	80kg	27kg
Rated voltage	220V 50Hz	220V 50Hz
Input power	1300W	300W
Input flow rate	70L/min	/
Oxygen production flow rate	5L/min or 10L/min	/
Machine material	Ferroalloy (Surface coating)	Stainless steel spray
Machine noise	≤60dB	/
Components	Power cord, Flow meter, Connection air tube	Power cord, Connecting pipe, Water collector, Air conditioning unit



User experience



Qualification certificate



Insurance certificate of the People's Insurance Company of China



Invention patent certificate



High and New Technology Enterprise Certificate



Specialized and new Certificate



Utility Model Patent Certificate



Appearance Design Patent



EU CE Certificate