

# DW-580

The Health Is Within Reach

CE SGS ISO



# Full digital ultrasonic diagnostic system

The DW-580 is equipped with advanced imaging technologies to provide you with high-quality images and a convenient workflow that allows you to scan with confidence and ease.

With its lightweight, laptop-like design, the DW-580 takes you wherever you need it.



---

## Innovative Design

- 12.1-inch professional medical LCD monitors make the images more intuitive.
- Back-lit keyboard silicon gel, more comfortable and wearable, no trouble in using in the darkroom.



## Efficient Diagnosis

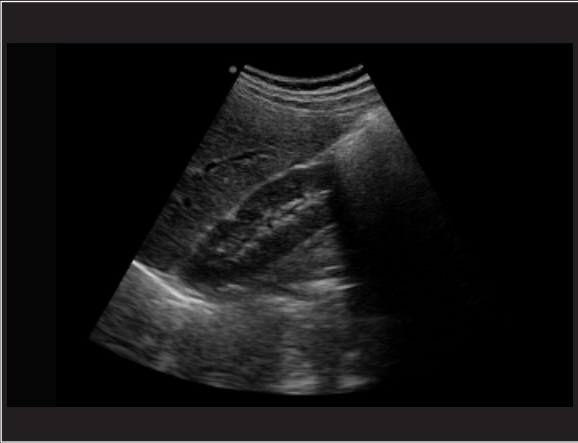
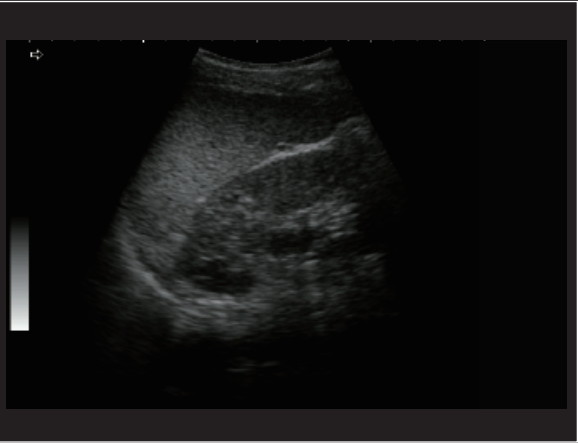
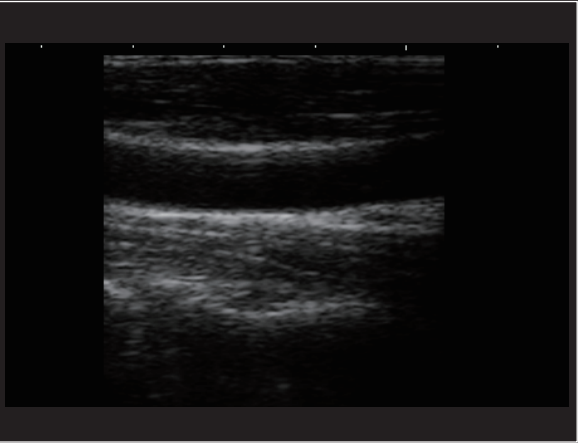
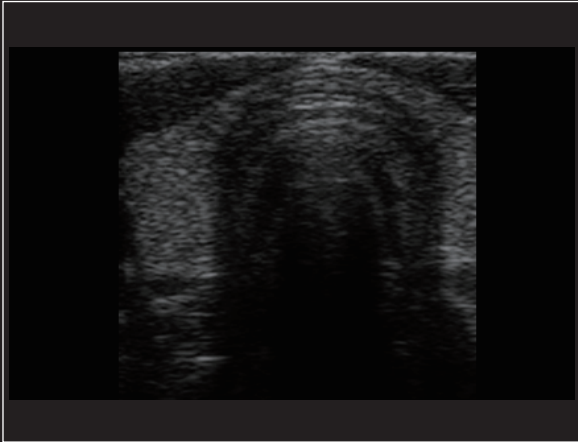
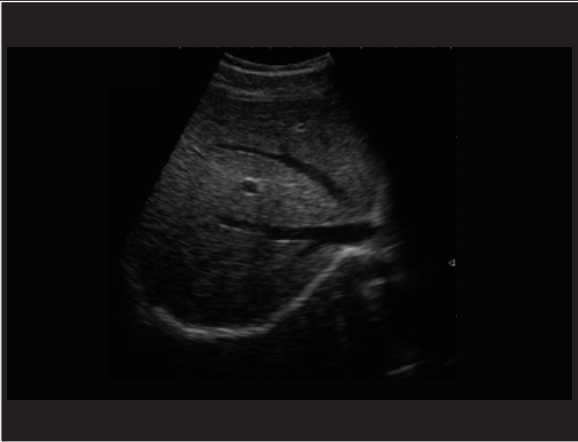
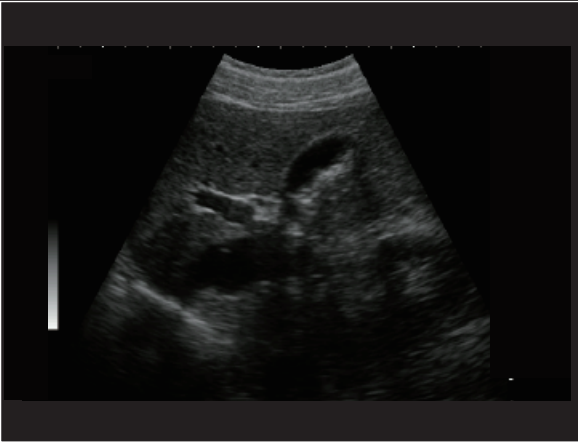
- The diagnostic instrument uses microcomputer control and digital scan converter (DSC).
- Uses digital beamforming (DBF).
- Frame correlation and other technologies, the whole image is clear, stable, high resolution.
- With B, B + B, 4B, B + M, M five kinds of display modes; image grayscale 256.

## Real-time Dynamic Exam

- Real-time dynamic aperture imaging (RDA).
- Real-time dynamic sound velocity apodization (DRA).
- Real-time dynamic spot-Dynamic Frequency Scanning (DFS).

=====

# Clinical image cases





**Convex probe**

Application: Abdomen, Obstetrics,  
Gynecology



**Linear probe**

Application: Small Parts, Vascular,  
Musculoskeletal



**Trans-rectal probe**

Application: prostate gland



**Micro-convex probe**

Application: Small parts, baby organs



**Trans-vaginal probe**

Application: Obstetrics, Gynecology,  
Urology

## Part of the probe display

---

---